



EverGreen  
construction LLC

The Most Energy Efficient Homes In The Market.

*"5 Star + Energy Star Certified - The Highest Rating Available"*

*"Exceeds The 2030 Energy Star Guidelines By Over 30%"*



*"Our Homes Test in the Top 3% Nationally For Energy Efficiency"*

**WANT TO KNOW  
HOW WE DO IT**

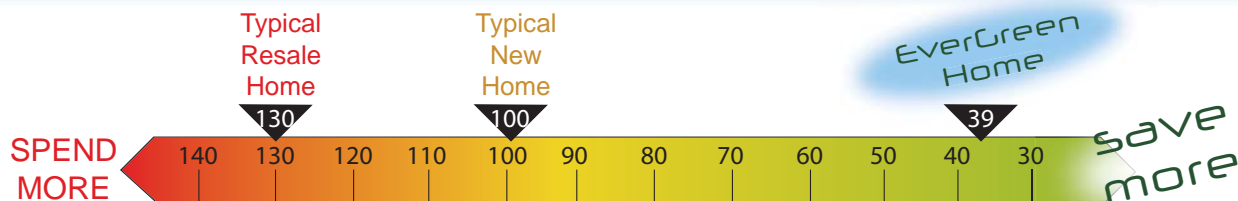


# Our Buildings

## The Most Energy Efficient Buildings In Our Market

- Every EverGreen home is performance tested by a RESNET certified third party rater.
- Test scores place our homes among the top 3% of the homes across the US.
- All our homes have earned the Energy Star 5 Star Plus rating, the highest available.
- We currently exceed the 2030 Energy Star guidelines by over 30%.
- Our homes meet all requirements of the American Lung Association's "Health House Certification", promoting healthy air quality.

## Energy Performance Guide



### Our 5 star Plus Energy Star Homes Include:

- Thermomass Insulated Concrete Foundation
- SIP (structural Insulated Panel) Construction
- High Performance Energy Star Rated Windows
- LED and high performance lighting
- 95% or better HVAC systems
- High efficiency water heaters
- Energy Star rated fans and appliances

### YOUR ESTIMATED MONTHLY ELECTRIC AND GAS BILL

**\$75**

actual energy consumption and costs may vary.

©2011 The HERS® Index is a registered trademark of the Residential Energy Services Network (RESNET). The HERS Index rating shown on this label is based on an average home plan calculated, using RESNET-approved software, RESNET-determined inputs and certain assumed conditions. The typical new home HERS Index rating of 100 is the RESNET HERS Index reference home, which is built to the specifications of the 2006 International Energy Conservation Code. More information about the HERS Index rating can be found on RESNET's website at <http://www.resnet.us>. The typical resale home HERS Index rating of 130 is a U.S. Department of Energy rating per its EnergySmart Home Scale(SM). The actual as-built HERS Index rating for EverGreen home will be determined by a RESNET-certified independent energy rater based on an on-site inspection, testing and an analysis of the final construction plan, and it may vary significantly from the as-designed rating shown on this label depending on changes made to the home plan as the home is constructed, including changes in interior and exterior options, appliances or features, and on the location, orientation and manner in which the home is built. The HERS Index rating is a measurement of a home's energy efficiency per RESNET standards, but it is not a warranty or guarantee of energy utility costs or savings. EverGreen Construction, LLC does not guarantee that any specific level of electric and gas energy utility costs or savings will be achieved or maintained, even if the home is built as designed per the home plan, and actual energy utility costs will depend on a number of factors, including but not limited to personal utility usage preferences, the rates, fees and charges of local energy utility providers, daily activities, home maintenance practices, household size, use and/or condition of appliances, lighting and internal climate control systems, and the surrounding climate and weather conditions. The estimated monthly electric and gas energy bill cost shown on this label is also generated from RESNET-approved software using assumptions about annual energy use solely from the heating and cooling systems, appliances and lighting that are included as standard with the relevant home plan, and average local energy utility rates available at the time the estimate is calculated. Gas utilities may not be available in some communities and energy utility costs in those communities will reflect only electrical utilities. Due to the various factors and inputs that can affect a HERS Index rating and monthly energy bill costs, buyers are cautioned against and should not rely solely or substantially on the HERS Index rating and the estimated monthly energy bill costs shown on this label in making a decision to build or purchase any EverGreen home. EverGreen Construction, LLC is not affiliated with RESNET, its service providers or with any home energy efficiency rating organization or system, software program or rater. These parties are all independent third parties. KB Home cannot guarantee that an as-built HERS Index rating will be equal to or lower than the HERS Index rating shown on this label. ©2011 EverGreen Construction, LLC 02/11



## Notice How

A typical home leaches heat through the wood studs. The insulation in between the studs does little to prevent heat loss. This is visible on a home when the temperature reaches the dew point.

## Building Smarter

EverGreen homes reduce Thermal Conductivity and retain more energy. SIP's provide better and more consistent insulation values. It's just a better way to build...



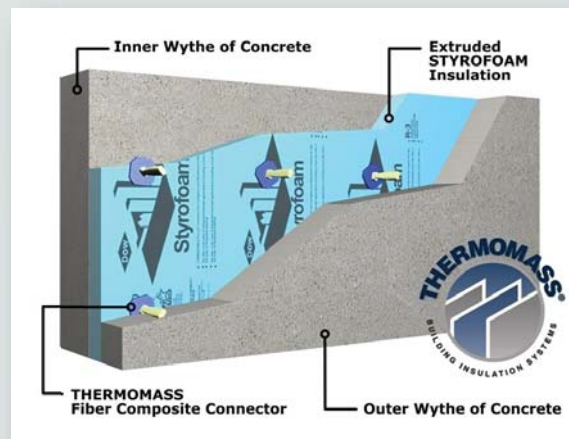
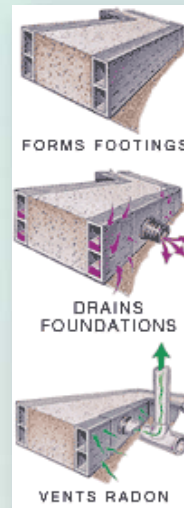
# How Do We Do It?

## Start with a Solid Foundation

CertainTeed's Form-A-Drain system. A Form-A-Drain removes excess moisture from the exterior and interior as well as provides venting for Radon gas.

Thermomass insulated concrete foundations. Thermomass is a proven building technique used in commercial building applications such as large warehouses and other concrete structures. Our concrete walls consist of 4 ¼" of concrete on the exterior, 2 ½" of closed cell foam in the center of the wall, and 4 ¼" of concrete on the interior.

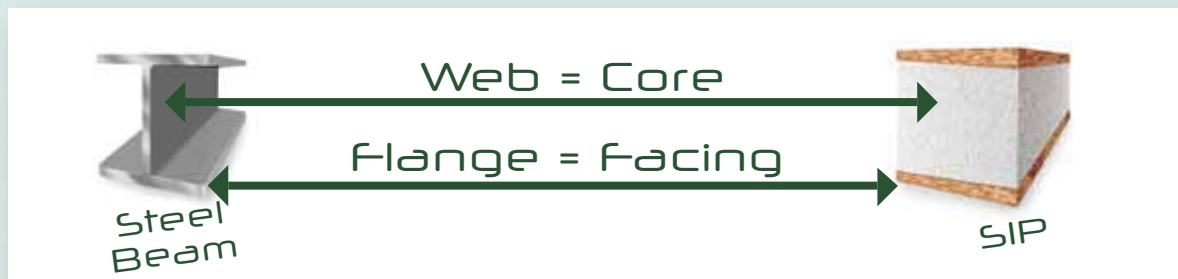
Thermomass provides an effective R-Value of 24 and exceeds current local building code requirements. It also addresses the moisture issues associated with traditional concrete walls and helps prevent the growth of mold and mildew.



## Next:

### Add SIPs (Structural Insulated Panels)

EverGreen builds exclusively with Structural Insulated Panels (SIPs). SIPs have been around since the 1930's and have been used in homes and commercial buildings nationwide. SIPs are a proven technology offering phenomenal energy efficiency, unmatched strength and superior accuracy in construction.



SIPs have survived numerous real-life natural disasters such as earthquakes, hurricanes, tornadoes, gas explosions and fires with minimal structural damage. A SIP building is assembled using screws instead of nails, creating a structure that is nearly 10 times stronger than a traditional building and over 50% more efficient.

SIPs are comprised of rigid polystyrene foam sandwiched between two sheets of high grade OSB (oriented strand board). While the panels are manufactured off-site, (similar to roof trusses in a conventional building) all homes are custom site built to any plan, not modular.



# Build Tight, Ventilate Right

## Air Quality

The air quality of our indoor environments effects our health and can contribute to building failures. Each EverGreen home is built to the standard of the American Lung Associations' Health House Program. We believe the air inside of our homes is just as important as energy efficiency. A traditional home "breathes" through the walls and roof, this method is very inefficient. Building a "tight" home means that we need to ventilate the home properly and efficiently using mechanical methods.

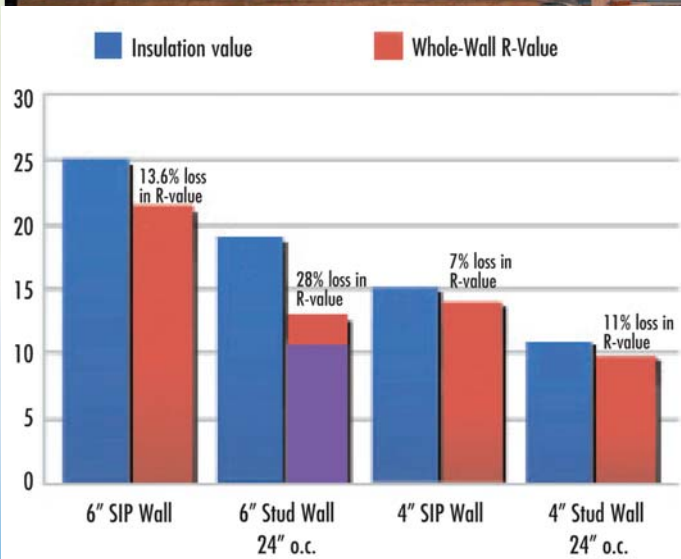
### Components to Building a Healthy Home

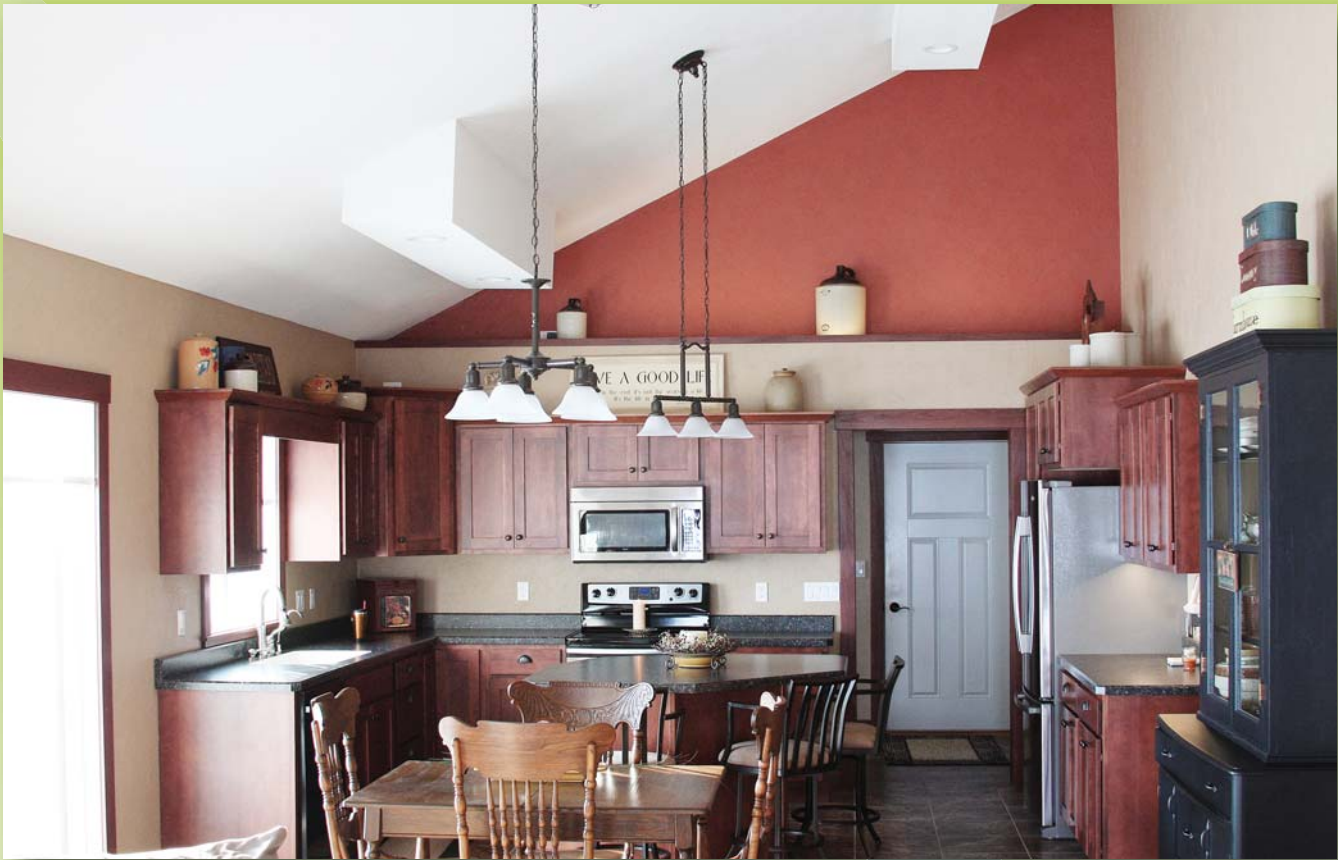
- Proper Insulated and Waterproofed Foundation
- SIP walls (advanced air sealing & insulation)
- Energy Efficient, High Performance Windows
- Whole House Ventilation (ERV, HRV, AE)
- Ultra-Violet Air Purification
- Humidity Control System
- Low or No VOC paints, stains or chemicals.
- A Knowledgeable Builder



# Expect Performance

Look at your current utility bills. Imagine reducing the costs associated heating and cooling by 50% or even more. Don't sacrifice comfort! Performance is based on 72 degrees in the winter, 74 degrees in the summer. Try doing that with a conventional stick built home! In fact, while we use 6" panels on our homes to provide superior performance according to the Oak Ridge National Laboratory (ORNL), a 4" SIP panels will out-perform a 2" x 6" wall with R-19 fiberglass insulation. Our roof systems provide up to 12-1/2" of continuous closed cell Styrofoam insulation (see image below).





## Expect Value

With all the superior advantages of our homes, the cost is comparable to conventional 2" X 6" (stick) built structures. How? While SIP wall panels cost more than a stick wall, in general a SIP structure can be built in less time, saving labor costs. We specialize only in SIP construction which gives us the knowledge and experience to construct a quality home and save our clients' money with little to no payback period.

## Expect Quality

SIPs allow us to build straighter, stronger and much more accurately than conventional construction. Add this to our relentless pursuit of quality and energy savings and you can expect the best most efficient home your money can buy.

# Our Company

## Reputation

Honesty, integrity and quality. Years ago, giving your word was an extension of trust. A person's integrity and character could be measured by their name. At EverGreen we are a family business and adhere to "old fashioned" values and trust.

## Personal Touch

Your dream home is personal. Making it a reality starts with a great plan and someone who cares about you and your home. EverGreen has the knowlege and experience to help make your dream a reality.



## Planning

We help you design a home that fits your family's lifestyle and budget.

## Truth In Pricing

We review all building costs with our clients and share as much information as they desire, an open book policy assures full disclosure of building costs. We will provide a quality home at a fair price.

## Consulting

EverGreen uses a network of building professionals to help guide and serve our clients. This wealth of experience and knowledge helps select everything from doors and windows, paint colors, cabinetry, lighting and flooring. Our goal is to create a stress free building experience for our clients.

*“The bitterness of poor quality lingers long after the sweetness of a low price is forgotten.”*

*- Writer and philosopher John Ruskin*



*“...they were honest and up front with everything...”*

*- Wayne and Joan Demmer*





Draw Your Home



[www.buildevergreen.com](http://www.buildevergreen.com)

Jason Schuster

*Sales Manager*

*[jschuster@buildevergreen.com](mailto:jschuster@buildevergreen.com)*

phone/fax  
563.582.5779

cell  
563.580.8826

toll free  
1.888.582.5779